



AbraMag® Clean-Up and Size Select Magnetic Beads

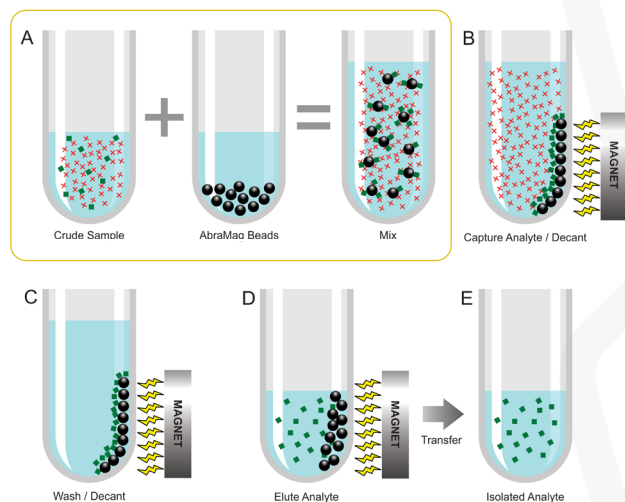
AbraMag® Clean-Up and Size Select Magnetic Beads are designed to purify DNA fragments of a desired size out of a sheared DNA sample, amplicons for PCR clean-up, or similar samples for use in downstream applications such as cloning or sequencing.

Fragments and amplicons are reversibly bound to paramagnetic particles while excess primers, salts, enzymes, dyes and free nucleotides left in the reaction are washed away.

The beads are designed for use with a magnetic separator rack or on open automated analyzer systems.

Product No. 544100 (5 mL), **544103** (60 mL), **544106** (450 mL)

AbraMag® Work Flow



AbraMag® workflow

(A - Mixing): Add sample to AbraMag® magnetic beads

(B - Binding): DNA fragments or amplicons of a desired size are captured by the beads in the presence of the optimized buffer. A magnet is used to secure the beads, with DNA attached

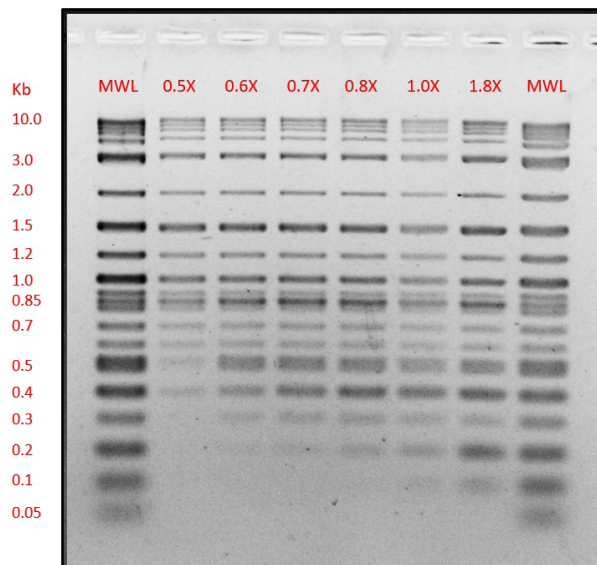
(C - Washing): Primers, dyes, and/or other unwanted reagents are washed away in a series of two wash steps

(D - Elution): DNA fragments or amplicons are then eluted and transferred to a new tube

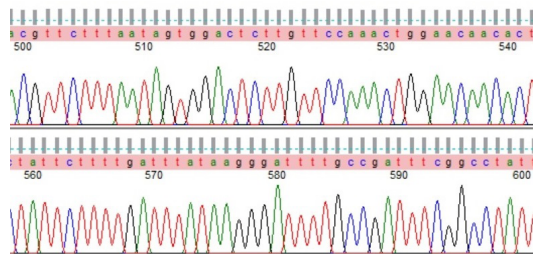
(E - Downstream Applications): Purified, high-quality isolated DNA fragments or amplicons may then be used for downstream procedures such as cloning and sequencing

Performance and Data

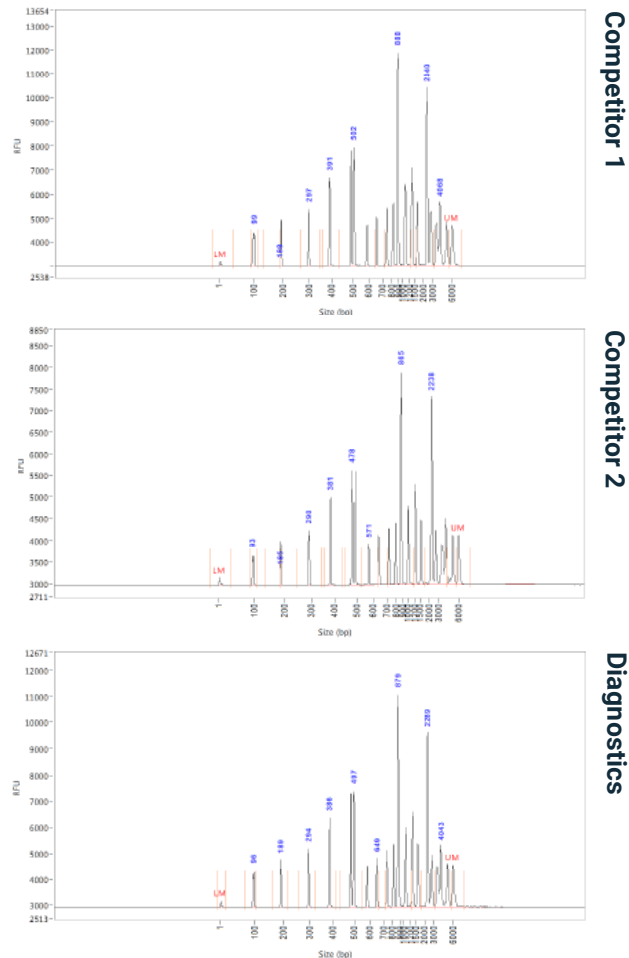
1.5% agarose gel in TBE, 1.5 hr. @ 100 V, 2 hr. SYBR Gold stain; Gold Standard Diagnostics results of 1 µg of NEB 1Kb+ (0.1 – 10 Kb) / Thermo Scientific FastRuler LowRange (0.05 – 1.5 Kb) ladders purified at multiple ratios.



Fragment of pGEM plasmid Sanger sequencing read, post-purification with AbraMag® beads on Hamilton robotic handler.



Agilent 5200 Fragment Analyzer capillary electrophoresis graph of Gold Standard Diagnostics results compared to two competitors; 1 µg of NEB 1Kb+ ladder (0.1 – 10 Kb) purified at a 1.8X ratio.



Why Use AbraMag®

AbraMag® magnetic beads present multiple advantages over other purification methods (precipitation/centrifugation, columns, plate-immobilized ligands or antibodies):

- Superior binding capacity
- More stable binding (analyte won't 'leak' off)
- Superior yield
- Equal or superior purity of target analyte
- Small size, irregular surface but non-porous particles mean high surface area for binding analyte, without trapping contaminants
- Stronger magnetic response than other beads of same size
- Better value
- Immediate, expert technical service
- Custom beads and magnetic separators available
- Additional magnetic bead products for: Genomic DNA, Streptavidin, Biotin, Amine, Anti-Human IgG, Anti-Rabbit IgG, Anti-Mouse IgG, Protein A, Protein G, Carboxyl



Gold Standard Diagnostics Horsham, Inc.

Phone: (215) 357-3911

Email: sales.abraxaxis@us.goldstandarddiagnostics.com

www.abraxiskits.com